

# OWNERS MANUAL



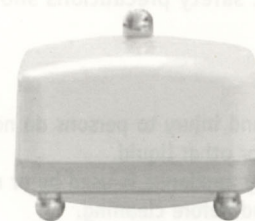
## ButterWizard

TEMPERATURE CONTROLLED BUTTERDISH

*The temperature-controlled butter dish  
for perfect smooth-spreading butter  
every hour of every day*

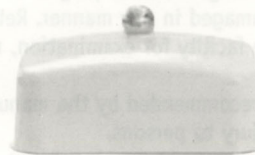
# SAVE THESE INSTRUCTIONS

## THE 5 COMPONENTS OF BUTTERWIZARD



### 1. PORTABLE MAIN UNIT

Efficient insulated holder to stand on table



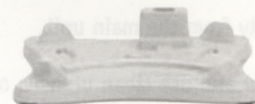
### 2. TIGHT-FITTING LID

Washable, helps keep temperature constant



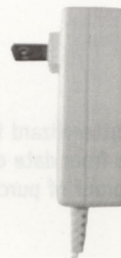
### 3. REMOVABLE BUTTER TRAY

For storing and serving.  
Dishwasher friendly



### 4. CHARGING-BASE

Where main unit normally rests for re-charging

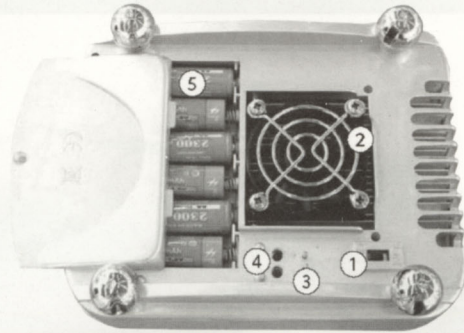


### 5. CHARGING-PLUG

To supply low-voltage power to charging-base

Different color lids are available for your ButterWizard!  
Visit our website! [www.butterwizard.com](http://www.butterwizard.com)

## BUTTERWIZARD TEMPERATURE-CONTROLLED BUTTER DISH



### UNDERSIDE OF MAIN UNIT

#### 1. ON/OFF POWER SWITCH

For safe control of your main ButterWizard unit

#### 2. TWO-SPEED FAN

Automatically adjusts according to the workload

#### 3. CHARGING PINS

Spring-loaded contacts transferring power to batteries

#### 4. TEMPERATURE CONTROL BUTTONS

For varying the temperature to suit different butters

#### 5. SET OF 6 RECHARGEABLE BATTERIES

High-capacity long-life nickel metal hydride cell

### YOUR BUTTERWIZARD IN USE

*Two hours of blade-smooth butter.* Away from the charging-base, your main unit and tray, with its lid normally kept closed, can be left on your table for up to 2 hours, keeping butter at a perfectly constant temperature for easy spreading. When the batteries run low, you will hear five rapid beeps before the unit switches itself off. Return the unit to the charging-base, where it should be left whenever it is not being used, plugged into the electric outlet and switched on. There will be enough power in your ButterWizard memory to keep your preferred set temperature. Should your batteries be fully discharged or removed from the portable main unit, the spreading temperature will revert back to factory setting.

## ASSEMBLY

### 1. UNPACK WITH CARE

Remove your new ButterWizard carefully from its box

### 2. PREPARATION FOR USE

Place charging-base on a level surface near an electrical outlet, (NOTE – Do not plug in electrical outlet) resting on its four rubber feet. Then lift off the lid and tray of the main unit, wash in warm water, using mild detergent and a soft cloth.

### 3. BATTERY INSTALLATION

Turn main unit upside-down and remove battery-cover with a Philips head screw-driver. Insert batteries, replace cover, fasten securely, and turn the unit's power-switch to 'On'. (It should always remain on, except during cleaning or periods of non-use.)

### 4. ASSEMBLE AND START CHARGING

Turn the main unit up on its feet again, coil any excess cable and clip it under the recharging base, replace tray, insert butter with wrapper removed, and close lid. Place the main unit on to the charging-base, noting that one corner of the base fits the slot in one of the feet, to ensure that the two units are placed together the right way round. Plug the unit into the electrical outlet. A single beep will confirm that your ButterWizard is correctly assembled and charging. For the initial charge, leave for 8 hours—during which you may remove lid and use butter, but don't remove tray, and always replace lid. For future use, you may remove main unit to the table whenever butter is ready, leaving the power on at the charging-base.

### FINE-TUNING THE TEMPERATURE

Your ButterWizard comes pre-set to a typical spreading temperature, which you may adjust to suit the texture of your chosen butter, for spreading on any kind of bread, toast or biscuits. Press the appropriate button once for each 0.5°F variation ("+" for warmer and softer, "-" for colder and harder), and repeat the action for any further adjustment. The unit will emit one beep for each command, until you reach the temperature limit, when it will remain silent. After adjusting, leave for 6 hours to stabilize.

## IMPORTANT SAFEGUARDS

When using electrical appliances, basic safety precautions should always be followed, including the following.

### SAFETY

1. To protect against fire, electric shock and injury to persons do not immerse cord, plugs, or the appliance in water or other liquid.
2. Close supervision is necessary when any appliance is used by or near children.
3. Unplug from outlet when not in use and before cleaning.
4. Do not operate any appliance with a damaged cord or plug or after the appliance malfunctions, or has been damaged in any manner. Return appliance to nearest authorized service facility for examination, repair or adjustment.
5. The use of accessory attachments not recommended by the manufacturer may result in fire, electric shock, or injury to persons.
6. Do not let cord hang over edge of table or counter or touch hot surfaces.
7. Do not place on or near a hot gas or electric burner, or in a heated oven.
8. Do not use the appliance for other than intended use.
9. Your charging base should be kept in a well-ventilated place out of direct sunlight.
10. When cleaning the charging base unplug the unit from the electrical outlet.

### HYGIENE

1. Do not clean with scouring pads.
2. Clean with a soft damp cloth, separately from the main unit.
3. Wash tray and lid before each use.
4. Wash your hands before handling butter and use clean utensils only.
5. Butter should not be left in the dish more than ten (10) days.
6. "ButterWizard" should not be used for anything other than butter.

### WARRANTY

This product is guaranteed for 12 months—if this ButterWizard fails due to a defect in material or workmanship within 12 months from date of purchase, replacement will be free of charge with an original proof of purchase.

## OPERATIONAL CHECKLIST

If in any doubt as to whether your "ButterWizard" is working properly, check the following:

1. Ensure charging-base is plugged firmly into the electrical outlet.
2. Ensure On/Off switch turned to 'On'.
3. Ensure batteries are inserted correctly .
4. Ensure fan is running audibly (*slower/quieter in moderate ambient temperatures*).
5. Ensure charging-pins are properly sprung, and able to move in and out smoothly.
6. Ensure temperature is set correctly for smooth spreading.
7. Should your batteries be fully discharged, your ButterWizard may take a few minutes to start charging.
8. If the batteries are fully discharged or removed from the main unit, the spreading temperature will revert back to factory setting.
9. You will hear a slight clicking as the main unit adjusts to the correct temperature; this is quite normal.
10. The "ButterWizard" is designed to work in most ambient temperatures. In extreme hot weather, it's efficiency may be somewhat affected.
11. Batteries are designed to last about two years.
12. Battery re-orders—quote Ni-MH 2300mAh

## ANY QUESTIONS? CONTACT US DIRECTLY

ButterWizard is an entirely new innovation and may require some guidance about it's use. For questions or comments please contact us at G&A Distributors.

**G & A**  
**DISTRIBUTORS**

PO Box 1598 | Medford, NJ 08055

Tel: 609-654-2795

Email: [Butterwizard@comcast.net](mailto:Butterwizard@comcast.net)

[www.butterwizard.com](http://www.butterwizard.com)

*Ask us for details of this original gift-idea.*

*See them in the store. Or buy straight from  
[www.butterwizard.com](http://www.butterwizard.com)*



Designed and manufactured by  
Alfillé Innovations Ltd.

Patent Application Number 0506005.8

PRINTED IN CHINA